

# Easy Vac™ Compact



## USER'S GUIDE

40N8, 35F3 SERIES 220-240V

- 3 Safety Instructions
- 4 Product View
- 5 Assembly
- 6-8 Operations
- 9-12 Maintenance and Care
- 13 Troubleshooting
- 14 Consumer Services
- 15 Replacement Parts
- 16 Warranty



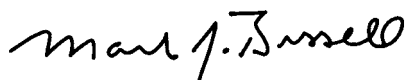
## Thanks for buying a BISSELL Easy Vac Compact Bagless Canister Vacuum

We're glad you purchased a BISSELL Easy Vac Compact bagless canister vacuum. Everything we know about floor care went into the design and construction of this complete, high-tech home cleaning system.

Your BISSELL canister vacuum is well made, and we back it with a limited one year warranty. We also stand behind it with a knowledgeable, dedicated Consumer Services department, so, should you ever have a problem, you'll receive fast, considerate assistance.

My great-grandfather invented the floor sweeper in 1876. Today, BISSELL is a global leader in the design, manufacture, and service of high quality homecare products like your BISSELL canister vacuum .

Thanks again, from all of us at BISSELL.



**Mark J. Bissell**

**President and Chief Executive Officer**

# IMPORTANT SAFETY INSTRUCTIONS

When using an electrical appliance, basic precautions should be observed, including the following:

## READ ALL INSTRUCTIONS BEFORE USING YOUR CANISTER VACUUM.

**⚠ WARNING:** To reduce the risk of fire, electric shock, or injury:

- Use indoors only.
- For dry pick up only.
- Do not leave machine when it is plugged in.
- Do not use with damaged cord or plug.
- If appliance is not working as it should, has been dropped, damaged, left outdoors, or dropped into water, return it to a service agent.
- Do not handle unit with wet hands.
- Do not pull or carry by cord, use cord as a handle, close door on cord, pull cord around sharp corners or edges, run appliance over cord, or expose cord to heated surfaces.
- Do not unplug by pulling on cord. Unplug by grasping plug.
- Do not run appliance over cord.
- Do not handle plug or appliance with wet hands.
- Do not expose hair, loose clothing, fingers or body parts to openings or moving parts.
- Do not pick up hot or burning objects such as cigarettes, matches, or hot ashes.
- Do not pick up flammable or combustible materials (lighter fluid, petrol, kerosene, etc.) or use in the presence of explosive liquids or vapour.
- Do not use appliance in an enclosed space filled with vapours given off by oil base paint, paint thinner, some moth proofing substances, flammable dust, or other explosive or toxic vapours.
- Not intended for use by persons (including children) with reduced physical, sensory or mental capabilities, or lack of experience and knowledge, unless they have been given supervision or instruction concerning use of the appliance by a person responsible for their safety
- Young children should be supervised to ensure that they do not play with the appliance.
- Remove plug from electrical outlet before cleaning or maintaining the appliance.
- If the supply cord is damaged, it must be replaced by the manufacturer or its service agent in order to avoid a hazard.
- Do not pick up toxic material (chlorine bleach, ammonia, drain cleaner, petrol, etc.).
- Do not use for any purpose other than described in this User's Guide.
- Use only manufacturer's recommended attachments.
- Do not use with any opening blocked; keep free of dust, lint, hair, and anything that may reduce air flow.
- Keep appliance on a level surface.
- Turn off all controls before unplugging.
- Be extra careful when cleaning stairs.
- This appliance is provided with double insulation. Use only identical replacement parts.
- Do not use without the dirt cup or a dust bag and filters in place.
- Pay close attention when working around children.

## SAVE THESE INSTRUCTIONS.

THIS MODEL IS FOR HOUSEHOLD USE ONLY.

## IMPORTANT

FOR OPERATION ON A 220-240 VOLT A.C. 50/60 Hz POWER SUPPLY ONLY.

If your appliance is fitted with a nonrewireable BS 1363 plug it must not be used unless a 13 amp (ASTA approved to BS 1362) fuse is fitted in the carrier contained in the plug. (Spares may be obtained from your BISSELL supplier). If for any reason the plug is cut off, it must be disposed of, as it is an electric shock hazard should it be inserted into a mains socket.

## Product view



Combination Crevice  
Tool/Dusting Brush



### CAUTION:

Do not plug in your vacuum until you are familiar with all instructions and operating procedures.

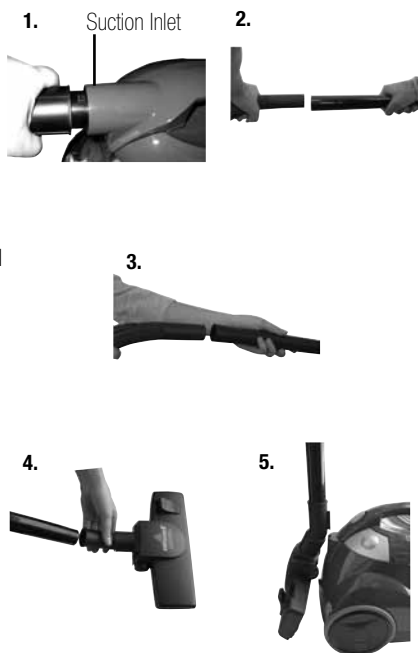
## Assembly

1. Connect hose to vacuum by inserting hose connector on the end of the hose into the suction inlet. Make sure the hose is positioned so the tabs on the hose connector line up with the notches on the suction inlet. Once inserted into the suction inlet, turn counter clockwise to lock into place.
2. Attach extension wands section together by inserting into one another and twisting slightly to tighten.
3. Connect hose handle to the end of the extension wand and twist slightly to tighten.
4. Connect floor nozzle to the end of the extension wand and twist slightly to tighten.
5. Once assembled, you can store your vacuum by inserting the storage clip (located on the back of the floor nozzle) into the storage slot on the rear of the vacuum.



### **WARNING:**

**Plastic film can be dangerous.  
To avoid danger of suffocation,  
keep away from babies and  
children.**



# Operations

## Power cord

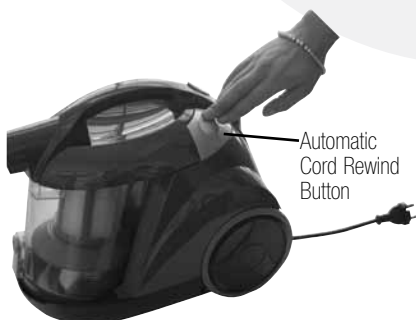
The power cord is located at the rear of the vacuum. Gently pull out the power cord, watching for the yellow line. Stop pulling the power cord once the yellow line is visible. There is also a red line, which indicates the end of the usable cord. Do not pull the power cord out beyond the red line.

## Automatic cord rewind

Your vacuum is equipped with an automatic cord rewind. When cleaning is finished, press the power button OFF and grasp the plug to disconnect from the electrical outlet. Hold the plug and press the automatic cord rewind button to rewind the cord automatically.

## Power button

Turn the power ON or OFF by pressing lightly downward on the power button (ⓘ).



## CAUTION:

Be careful to avoid injury as cord retracts very quickly.



## CAUTION:

Before using your vacuum, make sure that the dirt cup and all filters are in place. Do not operate your vacuum without the dirt cup and filters.

Power Button




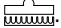
# Operations

## Special tools

**Your BISSELL Easy Vac Compact is not only a powerful carpet and rug vacuum cleaner, it's also a versatile bare floor and above floor vacuum cleaner when you select one of the special tools.**

### Floor nozzle:

Use to vacuum carpets, rugs and bare floors. Swivel head turns to get into tight spaces and fits under cabinets.

1. To vacuum carpets and rugs, push the brush switch to the carpet position . This will pull the brushes up into the floor nozzle.
2. To vacuum bare floors, push the brush switch to the bare floor position . This will extend the brushes down from the floor nozzle.

### Combination crevice tool/dusting brush:

Use the crevice tool in tight, narrow spaces. Use the dusting brush to clean curtains, draperies, cushions and fabrics.

## Tip:

Before cleaning under low furniture, check area first for objects that might harm the unit or block the hose.



## Tip:

Hair, string and small objects can block the hose and tools. Check them occasionally for obstructions.

# Operations

## Air flow regulator

Open the air flow regulator by sliding the regulator down towards the extension wand to an open position. This will reduce the suction power for vacuuming delicate fabrics.

For full suction power, close the air flow regulator by sliding the regulator up to the closed position.



### *Tip:*

Use the air flow regulator to reduce air flow as needed when using the tools.



# Maintenance and care

## Emptying the dirt cup

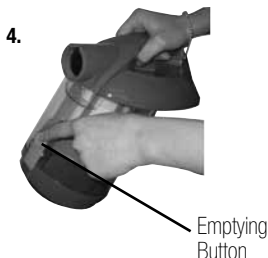
**Empty the dirt cup as soon as the dirt reaches the "FULL" lines on the sides of the dirt cup.**

1. Unplug the vacuum from the electrical outlet.
2. Remove the hose by turning the hose connector counter clockwise and pulling it out from the suction inlet. Set hose aside.
3. Press the dirt cup release button on the carry handle and lift up to remove the dirt cup.
4. Choose an emptying method. Method #2 is recommended for allergy sufferers.

**Method #1** – Hold the dirt cup over a trash can and push the emptying button to open the bottom. Close the bottom after the dirt empties.

**Method #2** – Place a plastic bag over the bottom of the dirt cup. Push the emptying button through the plastic to open the bottom. After the dust settles, close the bottom and remove the bag to discard.

5. Replace the dirt cup by placing it back into the vacuum and pushing down on the carry handle until it snaps back into place.



### WARNING:

To reduce the risk of electric shock, turn power switch OFF and disconnect plug from electrical outlet before performing maintenance or troubleshooting checks.

## Maintenance and care

### Cleaning the dirt cup filters

**Use only BISSELL replacement filters in your Easy Vac Compact.**

1. Unplug the vacuum from the electrical outlet.
2. The dirt cup filters can be reached by removing the dirt cup from the vacuum, grasping the handle on the bottom of the dirt cup filter assembly and turning counter clockwise to unlock. Pull straight down to remove.
3. Remove the dirt cup filter screen by grasping the bottom of the filter frame base and pulling straight up.
4. Remove the dirt cup filter by grasping the bottom of the filter frame base and turning the dirt cup filter counter clockwise and pulling straight up.
5. The dirt cup filter screen and dirt cup filter can be hand washed in cold water with a mild detergent. Rinse well and air dry thoroughly before placing back onto the filter frame base.
6. Attach the dirt cup filter back onto the filter frame base by lining up the tabs on the filter base with the notches on the dirt cup filter and turning clockwise to lock back into place.
7. Attach the dirt cup filter screen back on to the dirt cup filter by sliding it down over the dirt cup filter, making sure that the tabs on the bottom of the dirt cup filter screen line up with the notches on the dirt cup filter.
8. Insert the dirt cup filter assembly back into the dirt cup by lining up the tabs on the top of the dirt cup filter assembly with the notches inside the top of the dirt cup and turning the handle on the bottom of the dirt cup filter assembly clockwise to lock into place.



## Maintenance and care

### Cleaning the pre-motor filter

**The pre-motor filter protects the motor from dirt and dust particles. Use only BISSELL replacement filters in your Easy Vac Compact.**

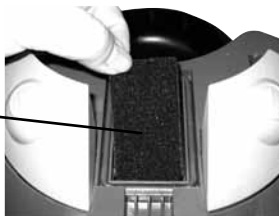
1. Remove the dirt cup from the vacuum, following steps 1-3 of Emptying the dirt cup on page 9.
2. The pre-motor filter is located between the power button and the automatic cord rewind button.
3. The pre-motor filter can be hand washed in cold water with a mild detergent. Rinse well and air dry thoroughly before placing back into the vacuum.

### **NOTICE:**

This product is intended for household use only and not for commercial or industrial use. Vacuuming of dust from products like plaster, concrete or ashes will damage the motor and void the warranty.

3.

Washable Pre-Motor Filter



### *Tip:*

For maximum cleaning performance, check the filters often and clean or replace if necessary.



### **WARNING:**

**Do not operate cleaner with damp or wet filters or without all filters in place.**

## Maintenance and care

### **Replacing the post-motor filter**

**The post-motor filter assists in the filtration process to return cleaner air to the room. Use only BISSELL replacement filters in your Easy Vac Compact.**

1. Unplug the vacuum from electrical outlet.
2. Remove the filter door (located on the back of the vacuum) by pushing down on the tab and pulling out and away from the vacuum.
3. The post-motor filter can be hand washed in cold water with a mild detergent. Rinse well and air dry thoroughly before placing back into the vacuum.
4. Replace the filter door by placing the tabs on the bottom of the filter door into the notches on the bottom of the post-motor filter compartment and pushing the tab forward back into the vacuum to lock into place.

2.



### **Clearing clogs from the dirt cup**

1. Unplug the vacuum from electrical outlet.
2. Remove the dirt cup from the vacuum, following steps 1-3 of Emptying the dirt cup on page 9.
3. Remove the dirt cup filter assembly from the dirt cup, following step 2 of Clean the dirt cup filter on page 10.
4. Tap the dirt cup filter assembly over a garbage container to remove any dirt or debris from the dirt cup filter screen that surrounds the dirt cup filter.
5. Reach up into the dirt cup to clear any dirt or debris from the dirt cup.
6. Check to see if there are any clogs in the suction inlet.
7. After clearing any dirt or debris from the dirt cup, replace the dirt cup filter assembly back in the dirt cup following step 8 of Cleaning the dirt cup filter on page 10.

## Troubleshooting



### **WARNING:**

To reduce the risk of electric shock, turn power OFF and disconnect plug from electrical outlet before performing maintenance or troubleshooting.

#### **Vacuum cleaner won't run**

##### **Possible causes**

1. Vacuum cleaner is not plugged in
2. Power button is not pressed down

##### **Remedies**

1. Check electrical plug
2. Press power button down

#### **Vacuum cleaner won't pick up or low suction**

##### **Possible causes**

1. Tools, hose and/or extension wands are blocked
2. Filters are dirty
3. Dirt cup is full
4. Hose connector not securely attached to suction inlet
5. Crack or hole in hose
6. Air flow regulator is set to open or minimum setting
7. Clog in the dirt cup

##### **Remedies**

1. Remove each part and check for blockages
2. Check and clean or replace all filters
3. Empty dirt cup
4. Make sure hose connector is locked into suction inlet
5. Check hose and replace if needed
6. Change to closed or maximum setting
7. Clear clog from dirt cup following instructions on page 12

#### **Visible dust escaping from vacuum**

##### **Possible causes**

1. Dirt cup is full
2. Filters missing or installed incorrectly
3. Filters are dirty
4. Hose is blocked
5. Hose connector not securely attached to suction inlet
6. Crack or hole in hose

##### **Remedies**

1. Empty dirt cup
2. Check all filters for correct installation
3. Check and clean or replace all filters
4. Remove hose and check for blockages
5. Make sure hose connector is locked into suction inlet
6. Check hose and replace if needed

**Other maintenance or service not included in the manual should be performed by an authorized service representative.**

**Thank you for selecting a BISSELL product.**

**Please do not return this product to the store.**

## BISSELL Consumer Services

### If your BISSELL product should require service:

In the UK, Australia or New Zealand, call BISSELL Consumer Services at the numbers below and we will give you the location of a BISSELL Authorized Service Center in your area. For all other countries, contact your local in country distributor for questions, service, or repair.

If you have questions about your warranty or need replacement parts please contact the numbers below.

#### For UK inquiries:

Monday - Thursday 9 am — 5 pm  
Friday 9 am — 4 pm

#### **BISSELL Homecare (Overseas) Inc.**

The Boat Yard  
105 Straight Road  
Old Windsor  
Berkshire, SL4 2SE  
United Kingdom  
Telephone: 0844-888-6644

#### For Australian inquiries:

Monday - Friday 9 am — 5 pm

#### **BISSELL AUSTRALIA PTY LIMITED**

42 Rocco Drive  
Scoresby 3179  
Victoria  
Australia  
Telephone: 1-800-811-183

#### For New Zealand inquiries:

Monday - Friday 9 am — 5 pm

#### **Parex Industries Ltd.**

5 Tolich Place  
Henderson 0610  
Auckland  
New Zealand  
Telephone: 0800-247-735

#### For all other inquiries:

Monday - Friday 8 am — 4 pm

#### **BISSELL Homecare, Inc.**

PO Box 1888  
Grand Rapids, Michigan 49501 USA  
Telephone: 01-616-453-4451  
Fax: 01-616-453-1383

Or visit the BISSELL website - [www.bissell.com](http://www.bissell.com)

When contacting BISSELL, have model number of unit available.

Please record your Model Number: \_\_\_\_\_

Please record your Purchase Date: \_\_\_\_\_

**Note: Please keep your original sales receipt. It provides proof of date of purchase in the event of a warranty claim. See Warranty on page 16 for details.**

Please do not return this product to the store.

## Replacement parts - BISSELL Easy Vac Compact

Item	Part No.	Part Name
1	203-1531	Dirt Cup Filter Screen
2	203-1532	Dirt Cup Filter
3	203-1533	Dirt Cup Filter Frame Base
4	203-1534	Pre-Motor Filter
5	203-1535	Post-Motor Filter
6	203-1536	Floor Nozzle
7	203-1537	Hose with Handle
8	203-1538	Extension Wands (2)
9	203-1539	Combination Crevice Tool/Dusting Brush

1



2



3



4



5



6



7



8



9



## Warranty - BISSELL Easy Vac Compact

This warranty gives you specific legal rights, and you may also have other rights which may vary from country to country. If you need additional instruction regarding this warranty or have questions regarding what it may cover, please contact BISSELL Consumer Services by telephone, or regular post as described below, or contact your local in country distributor.

### Limited One Year Warranty

Subject to the \*EXCEPTIONS AND EXCLUSIONS identified below, BISSELL Homecare, Inc., will replace (with new or remanufactured components), at BISSELL's option, free of charge from the date of purchase by the original purchaser, for one year any defective or malfunctioning part do to manufacturers defect.

This warranty applies to product used for personal, and not commercial or rental service. This warranty does not apply to fans or routine maintenance components such as filters, belts, or brushes. Damage or malfunction caused by negligence, abuse, or use not in accordance with the User's Guide is not covered.

#### For UK inquiries:

Monday - Thursday 9 am — 5 pm  
Friday 9 am — 4 pm

#### BISSELL Homecare (Overseas) Inc.

The Boat Yard  
105 Straight Road  
Old Windsor  
Berkshire, SL4 2SE  
United Kingdom  
Telephone: 0844-888-6644

#### For New Zealand inquiries:

Monday - Friday 9 am — 5 pm

#### Parex Industries Ltd.

5 Tolich Place  
Henderson 0610  
Auckland  
New Zealand  
Telephone: 0800-247-735

#### For Australian inquiries:

Monday - Friday 9 am — 5 pm

#### BISSELL AUSTRALIA PTY LIMITED

42 Rocco Drive  
Scoresby 3179  
Victoria  
Australia  
Telephone: 1-800-811-183

#### For all other inquiries:

Monday - Friday 8 am — 4 pm

#### BISSELL Homecare, Inc.

PO Box 1888  
Grand Rapids, Michigan 49501 USA  
Telephone: 01-616-453-4451  
Fax: 01-616-453-1383

**BISSELL HOMEWARE INC. IS NOT LIABLE FOR INCIDENTAL OR CONSEQUENTIAL DAMAGES OF ANY NATURE ASSOCIATED WITH THE USE OF THIS PRODUCT. BISSELL'S LIABILITY WILL NOT EXCEED THE PURCHASE PRICE OF THE PRODUCT.**

#### \*EXCEPTIONS AND EXCLUSIONS FROM THE TERMS OF THE LIMITED WARRANTY

**THIS WARRANTY IS EXCLUSIVE AND IN LIEU OF ANY OTHER WARRANTIES EITHER ORAL OR WRITTEN. ANY IMPLIED WARRANTIES WHICH MAY ARISE BY OPERATION OF LAW, INCLUDING THE IMPLIED WARRANTIES OF MERCHANTABILITY AND FITNESS FOR A PARTICULAR PURPOSE, ARE LIMITED TO THE ONE YEAR DURATION FROM THE DATE OF PURCHASE AS DESCRIBED ABOVE.**



©2010 BISSELL Homecare, Inc.  
Grand Rapids, Michigan  
All rights reserved. Printed in China  
Part Number 110-4186  
Rev 1 / 10  
Visit our website at:  
[www.bissell.com](http://www.bissell.com)

